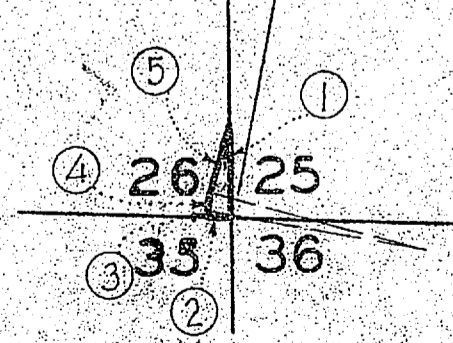


N°	COURSE	LENGTH	RAD.	TAN.	Δ R. & L.
1.	S. 0° 22' W.	98.8			
2.	N. 87° 25½' W.	27.3			
3.	N. 10° 19' E.	1.7			
4.	N. 13° 03½' E.	23.0	240.0		5° 29' R.
5.	N. 15° 48' E.	82.7			
6.	N. 28° 11' W.	160.6			
7.		32.5	200.0	16.3	9° 19' R.
8.	N. 18° 52' W.	85.3			
9.		53.7	100.0	27.5	30° 45' L.
10.	N. 49° 37' W.	27.9			
11.		54.9	100.0	28.1	31° 27½' L.
12.	N. 81° 04½' W.	178.7			
13.		44.3	100.0	22.5	25° 23' R.
14.	N. 55° 41½' W.	93.9			
15.		34.5	300.0	17.3	6° 35' R.
16.	N. 49° 06½' W.	137.0			
17.		23.3	100.0	11.7	13° 21' R.
18.	N. 35° 45½' W.	190.6			
19.		23.3	100.0	11.7	13° 20' R.
20.	N. 22° 25½' W.	93.7			
21.		42.9	100.0	21.8	24° 35' L.
22.	N. 47° 00½' W.	64.1			
23.		49.8	100.0	25.4	28° 32' R.
24.	N. 18° 27½' W.	110.5			
25.		29.2	300.0	14.7	5° 35½' R.

APPOLUS TAYLOR
 A part of E² S E⁴ Sec. 26
 A part of NW⁴ SW⁴ Sec. 25
 T. 8 N., R. 2 W., S. 1 M.
 Total 1.94 Acres



DEPARTMENT OF THE INTERIOR
 BUREAU OF RECLAMATION
 OGDEN RIVER PROJECT - UTAH
 RIGHTS OF WAY
OGDEN BRIGHAM CANAL

DRAWN: C.M.A. SUBMITTED: _____
 TRACED: F.W.R. RECOMMENDED: _____
 CHECKED: R.E.P. APPROVED: _____

4-1-D-172 Ogden, Utah 1-30-35

Scale 1 in = 200 ft